

Activity Type

Matching, speaking and writing activity, pair work

Focus

Comparative adjectives

Comparative sentences with 'than'

Aim

To link nouns together by making comparative sentences with 'than'.

Preparation

Make one copy of the cards for each pair of students and cut as indicated.

Level

Elementary (A1-A2)

Time

35 minutes

Introduction

In this engaging comparatives game, students link nouns together by making comparative sentences with 'than'.

Procedure

Divide the students into pairs.

Give each pair of students a set of noun cards. Tell the students to shuffle the cards and deal them out evenly.

One student goes first and puts one of their noun cards face up on the table.

The students then take it in turns to put down a noun card and make a comparative sentence with 'than', linking the two nouns together, e.g. 'A car is faster than a bus'. 'A bus is bigger than an elephant', etc.

Students can put a card down either before or after the card or card chain on the table, similar to dominoes.

Each time a student puts down a card they must use a different comparative adjective.

If a student makes a grammar mistake or can't think of a way to link two noun cards together, they miss a turn.

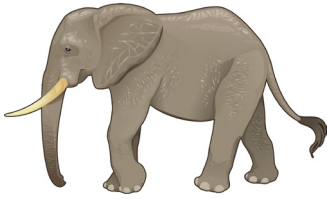
This continues back and forth with students linking nouns together with different comparative adjectives.

The first student to get rid of all their cards wins the game.

When the students have finished, have the pairs write out the comparative sentences they made.

Students then read out their sentences to the class and feedback is given.

an elephant



a girl



a car



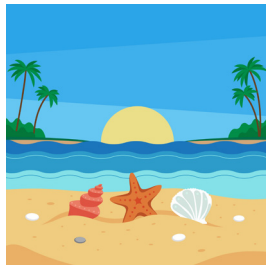
a bus



an old man



a beach



a city



a baby



a glass of water



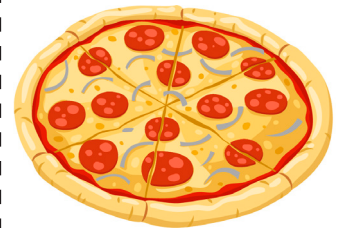
a tiger



a cup of coffee



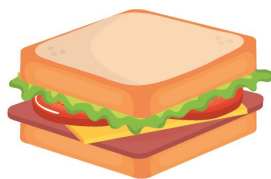
a pizza



a mouse



a sandwich



a cat



a skier



a jacket



a bird



a T-shirt



an airplane

