



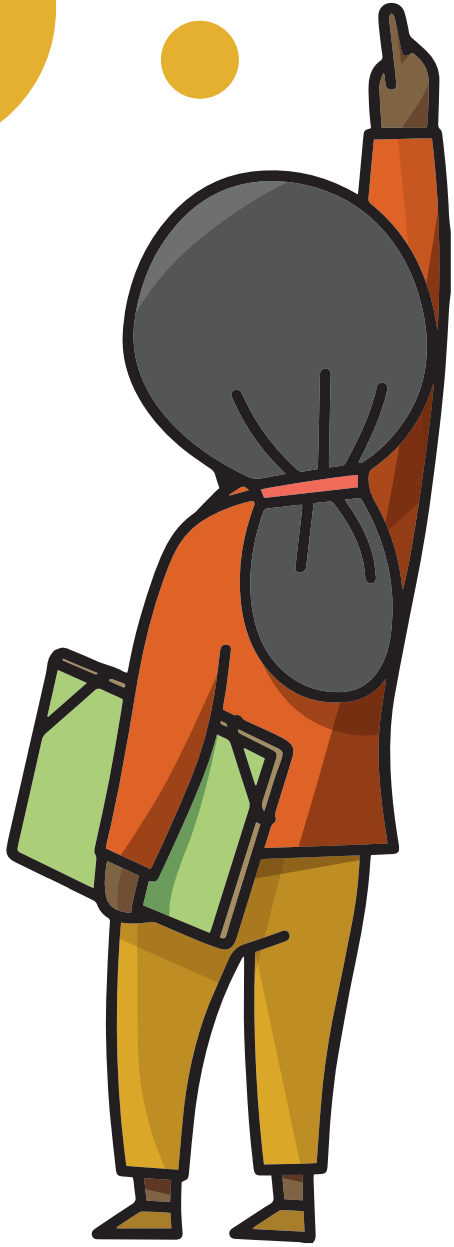
HAVE
GOT

CAN

WAS
WERE

IF

TO
BE



PREPOSITIONS OF TIME

PREPOSITIONS OF TIME

Grammar – PREPOSITIONS OF TIME

Activity 1. Write “AT”, “IN” or “ON”



- | | |
|---------------------------|------------------------|
| a.- _____ June | k.- _____ Friday |
| b.- _____ the afternoon | l.- _____ 1976 |
| c.- _____ Saturday | m.- _____ night |
| d.- _____ 1997 | n.- _____ 5:00 |
| e.- _____ winter | o.- _____ Monday night |
| f.- _____ the morning | p.- _____ July |
| g.- _____ Christmas | q.- _____ 2016 |
| h.- _____ Wednesday | r.- _____ summer |
| i.- _____ 2011 | s.- _____ 6:00 |
| j.- _____ Tuesday morning | t.- _____ Sunday |

Activity 2. Write “AT”, “IN” or “ON”



- a.- We usually play basketball _____ Fridays.
- b.- We can go to the park _____ the weekend.
- c.- My birthday is _____ April.
- d.- I have classes _____ the morning.
- e.- I was born _____ 2005.
- f.- I usually go to bed _____ 9:00.
- g.- I meet my friends _____ the afternoons.
- h.- I usually get up _____ 8:00.
- i.- We often go to the beach _____ summer.
- j.- I don't go to school _____ Saturdays.

Grammar – PREPOSITIONS OF TIME

Activity 3. Write “AT”, “IN” or “ON”



- a.- I was born _____ October.
- b.- I have class _____ nine o'clock.
- c.- I usually sleep _____ night.
- d.- I started playing football _____ 2015.
- e.- I do my homework _____ the afternoon.
- f.- I finish classes _____ 5 o'clock.
- g.- My birthday is _____ July.
- h.- I don't go to school _____ Sundays.
- i.- I go to school _____ the mornings.
- j.- My dad was born _____ September 2nd.

Activity 4. Write in order



- a.- I classes from 9 have 5 to _____
- b.- The 8 shop at closes _____
- c.- I computer play the at weekends _____
- d.- I morning breakfast the eat in _____
- e.- pool I go the to summer in _____
- f.- have classes to from I 9:00 4:00 _____
- g.- play football Mondays on I _____
- h.- beach the go I July in to _____
- i.- born was 2005 I in _____
- j.- winter go mountains I the to in _____

Grammar – PREPOSITIONS OF TIME

Activity 5. Write “AT”, “IN”, “ON” or “FROM...TO...”



- a.- i have classes _____ 8:00 _____ 2:00.
- b.- I go to sleep _____ night.
- c.- I get up _____ 8:00.
- d.- I was born _____ December 15th.
- e.- I usually play football _____ 6:00 _____ 7:30.
- f.- Maria’s birthday is _____ November.
- g.- We usually go to the park _____ the evenings.
- h.- I have maths _____ Mondays.
- i.- My garden is very beautiful _____ spring.
- j.- I have English _____ 3:00 _____ 4:00.
- k.- I usually start school _____ September 1st.
- l.- We go to the library _____ Tuesdays.
- m.- I play basketball _____ the weekends.
- n.- My brother watches TV _____ the evening.
- o.- I go to the cinema _____ Wednesdays.
- p.- I usually do my homework _____ the afternoon.
- q.- My birthday is _____ February.
- r.- I often eat lunch _____ 1:00.
- s.- I can play computer _____ 5:00 _____ 5:30.
- t.- I have music _____ Fridays.

Grammar – PREPOSITIONS OF TIME

Activity 6. Circle the correct answer



a.- I usually get up _____ 8:00 in the morning.

AT

IN

ON

b.- They usually go on holiday _____ summer.

AT

IN

ON

c.- We can go to the cinema _____ the weekend.

AT

IN

ON

d.- Are you coming _____ Tuesday?

AT

IN

ON

e.- See you _____ Friday.

AT

IN

ON

f.- I get up _____ half past eight.

AT

IN

ON

g.- My friends come _____ the afternoon.

AT

IN

ON

h.- We eat lunch _____ two o'clock.

AT

IN

ON

i.- His birthday is _____ May.

AT

IN

ON

Grammar – PREPOSITIONS OF TIME

Activity 7. Circle the correct sentence



- 1 a.- I usually go to school on Mondays.
b.- I usually go to school in Mondays.
c.- I usually go to school at Mondays.

- 2 a.- The film starts in 6:00.
b.- The film starts on 6:00.
c.- The film starts at 6:00.

- 3 a.- Can he go to the park at the afternoon?
b.- Can he go to the park on the afternoon?
c.- Can he go to the park in the afternoon?

- 4 a.- My birthday is on November 9th.
b.- My birthday is in November 9th.
c.- My birthday is at November 9th.

- 5 a.- She usually goes to bed in night.
b.- She usually goes to bed at night.
c.- She usually goes to bed on night.

- 6 a.- I have to go to the doctor on Monday.
b.- I have to go to the doctor at Monday.
c.- I have to go to the doctor in Monday.

- 7 a.- They play football at Saturdays.
b.- They play football in Saturdays.
c.- They play football on Saturdays.

Grammar – PREPOSITIONS OF TIME

Activity 8. Write “AT”, “IN”, “ON” or “FROM...TO...”



- a.- I usually go to bed _____ night.
- b.- i eat lunch at home _____ Christmas Day.
- c.- I finish classes _____ 17:30.
- d.- John’s birthday in _____ May.
- e.- We usually go to the beach _____ summer.
- f.- He goes to the cinema _____ the evening.
- g.- I have classes _____ Monday _____ Friday.
- h.- I am lazy _____ the mornings.
- i.- I often meet my friends _____ the weekends.
- j.- I go to the library _____ Tuesday afternoon.

Activity 9. Circle the mistakes



- a.- I was born on July.
- b.- I usually get up in 8:00 in the morning.
- c.- I have classes from Monday in Friday.
- d.- I often go to the cinema in Wednesday.
- e.- I go to bed in night.
- f.- I was born at 2003. I was born in Vancouver.
- g.- From 2001 on 2008, Jane lived in Canada.
- h.- My birthday is on August.
- i.- The train leaves in 4:30 in the afternoon.
- j.- I usually eat lunch on 2:00.

Grammar – PREPOSITIONS OF TIME

Activity 10. Write “AT”, “IN” or “ON”

- | | |
|----------------------------------|-------------------------------------|
| a.- _____ September | k.- _____ August |
| b.- _____ morning | l.- _____ Easter |
| c.- _____ 3:30 | m.- _____ February 21 st |
| d.- _____ 2009 | n.- _____ 7:00 |
| e.- _____ April 15 th | o.- _____ 2003 |
| f.- _____ Monday | p.- _____ winter |
| g.- _____ 1986 | q.- _____ January |
| h.- _____ 9:15 | r.- _____ Thursday |
| i.- _____ December | s.- _____ night |
| j.- _____ afternoon | t.- _____ Christmas |

Activity 11. Linking words. Find sentences

I	SHE	WE	MORNING.	NIGHT.
GO	STUDIES	HAVE	THE	AT
TO	IN	CLASSES	IN	GUITAR
THE	THE	EVENING.	PLAY	THE
SCHOOL	O’CLOCK.	HE	THEY	2006.
AT	8	WAS	BORN	IN

Grammar – PREPOSITIONS OF TIME

Activity 12. Write sentences



- a.- _____ on Monday.
- b.- _____ in the morning.
- c.- _____ six o'clock.
- d.- _____ in summer.
- e.- _____ on Wednesday.
- f.- _____ at night.
- g.- _____ at the weekend.
- h.- _____ from 3 to 5.
- i.- _____ in 2005.
- j.- _____ in the afternoon.
- k.- _____ January 6.
- l.- _____ in October.
- m.- _____ in autumn.
- n.- _____ December 3.
- o.- _____ on Sundays.
- p.- _____ in winter.
- q.- _____ on Fridays.
- r.- _____ in 2016.
- s.- _____ from Monday to Friday.
- t.- _____ in February.

Grammar – PREPOSITIONS OF TIME

Activity 13. Correct the mistakes



a.- I usually go to the cinema in Fridays.

b.- My dad was born on 1984.

c.- They always go to the beach at summer.

d.- I have classes from Monday in Friday.

e.- My family and I go to the cinema on the weekends.

f.- What are you doing in Monday?

g.- I am always lazy on the mornings.

h.- I always meet my friends at Saturdays.

i.- I go to school in 8:30 in the morning.

j.- I play volleyball from half past six in seven.

Grammar – PREPOSITIONS OF TIME

Activity 14. Find the vowels and write the sentences 

AEIOU

1.- __ ST__RT CL__SS__S __T N__N__.

2.- W__ G__ T__ TH__ B__CH __N S__MM__R.

3.- MY B__RTHD__Y __S __N N__V__MB__R.

4.- __ G__ T__ SL__P __T N__GHT.

5.- SH__ W__S B__RN __N 2004.

6.- W__ G__ T__ TH__ P__RK __N S__ND__YS.

7.- __ F__N__SH CL__SS__S __T F__V__.

8.- W__ H__V__ __N __X__M __N T__SD__Y.

9.- M__ D__D W__S B__RN __N 1978.

10.- __ PL__Y C__MP__T__R __T S__X.

Grammar – PREPOSITIONS OF TIME

Activity 15. Read and find the secret message



a		b	c		d	e		f	g	h		i	j		k	l	m	n

CORRECT INCORRECT

a.- My birthday is in November.	I	W
b.- I was born in 2006.	G	S
c.- She goes to the mountains in winter.	O	P
d.- We go to the cinema in Tuesdays.	D	T
e.- I start classes at nine.	O	N
f.- They play football on summer.	V	B
g.- I like running in the morning.	E	I
h.- Peter's birthday is in September.	D	U
i.- We go to the park at the weekends.	A	R
j.- I go to bed on night.	E	T
k.- We eat lunch at half past two.	N	S
l.- She plays the violin in Mondays.	O	I
m.- I have classes from Mondays to Fridays.	N	C
n.- He goes to London on June.	F	E