

Fantasy

BUSY'S



Watch

by Lily Ryan

illustrated by
Akemi Gutierrez



Mc
Graw
Hill

PAIRED
READ

Make a Clock

STRATEGIES & SKILLS

Comprehension

Strategy: Make and
Confirm Predictions

Skill: Plot

High-Frequency Words

away, now, some, today,
way, why

Phonics

Long *a*: *a_e*

Content Standards

Social Studies

Geography

Word count: 158**

**The total word count is based on words in the running text and headings only. Numerals and words in captions, labels, diagrams, charts, and sidebars are not included.



Essential Question

How do we measure time?



by Lily Ryan

illustrated by Akemi Gutierrez

Busy the dog loves his
watch!

“What time of day is it?”
asks Kay.



“Tick-tock.

It’s 6:00!

It’s time to get up!”
says the pup.



Busy can't wait.

"Why, that boy is never late! It's 6:38."



Busy jumps for joy.

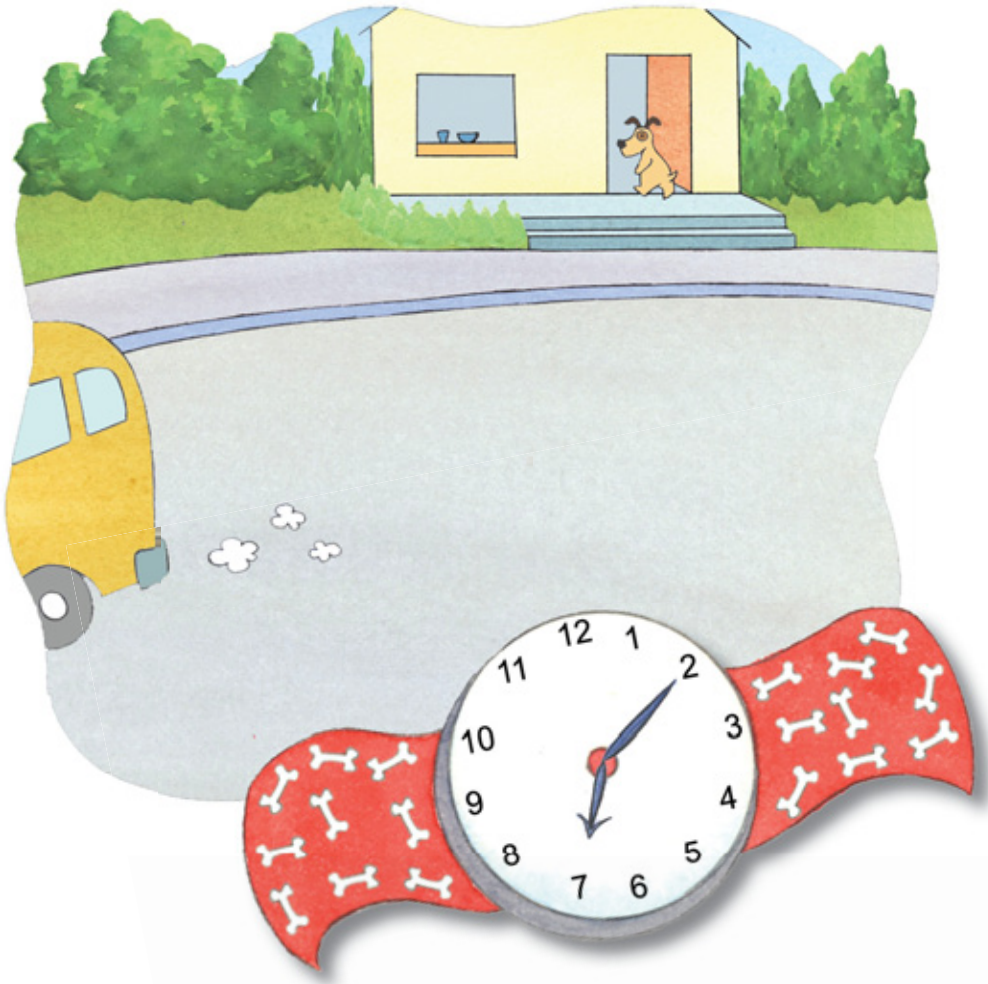
He says, "There's the paperboy!"





Kay says, "I'm on my way!
I'll see you today at three."

Busy says, "Then you will
play with me!"



Kay goes away.

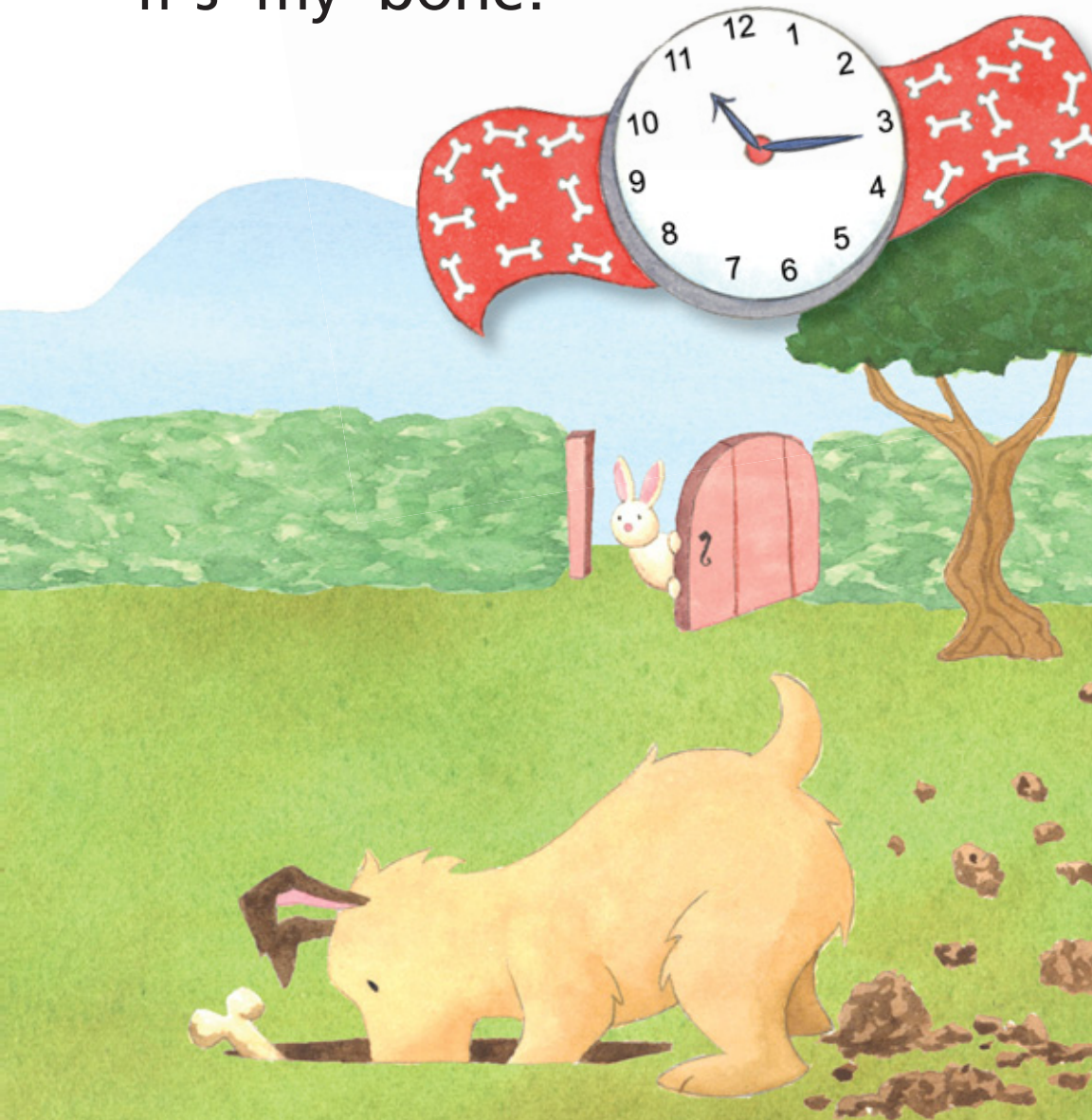
It's 7:10.

Busy goes inside again.

Now it's 9:00.
Time for Busy's nap!
He dreams about a map.



Busy says, "It's 11:15.
Time to dig!
It's not a stone,
it's my bone!"



Busy says, "It's 1:00!
Time for some fun.
I'll make that bunny run."



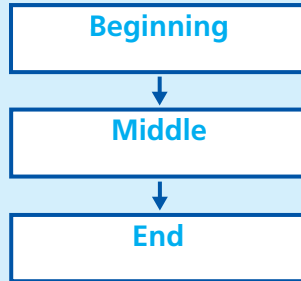
Busy says, "It's 3:00!
It's time to play!
Hurray!"



Respond to Reading

Retell

Use the chart
to retell
Busy's Watch.



Text Evidence

1. Look at pages 2 and 3. How does the story start? **Plot**
2. Look at page 11. Why is Busy happy? **Plot**
3. Is *Busy's Watch* a pretend story, or is it real? How can you tell? **Genre**

Compare Texts

Read about how to make a clock.

Make a Clock



1. Make the numbers on the clock face.



2. Cut out the hands.



3. Punch a hole in the hands.



4. Make a hole in the plate. Get some help.



5. Set the hands.

Use the **clock**.
What **time** is it?



Make Connections

Look at both stories. What are the parts of a watch and a clock?

Text to Text

Focus on Literary Elements

Dialogue Dialogue is the words the characters say.

What to Look for Dialogue is set off by quotation marks.

“What time of day is it?” asks Kay.

Your Turn

Work with a partner. Think of a story that you both know. Use dialogue to act out a scene from the story.

Thinkmark

Characters

Who are the characters in *Busy's Watch*?

Setting

Where did *Busy's Watch* happen?

Make Connections

Why do you like to know what time it is?