

Play

A Tree's Life



by Mateo Garza
illustrated by Louise A. Ellis



Mc
Graw
Hill

PAIRED
READ

Inside Trees

STRATEGIES & SKILLS

Comprehension

Strategy: Make and Confirm Predictions

Skill: Sequence

High-Frequency Words

green, grow, pretty, should, together, water

Phonics

Long *i*: *i_e*

Content Standards

Science

Life Science

Word count: 358**

Photography Credit: Cover; Fotosearch/Getty Images

**The total word count is based on words in the running text and headings only. Numerals and words in captions, labels, diagrams, charts, and sidebars are not included.



Education

Copyright © The McGraw-Hill Companies, Inc.

All rights reserved. No part of this publication may be reproduced or distributed in any form or by any means, or stored in a database or retrieval system, without the prior written consent of The McGraw-Hill Companies, Inc., including, but not limited to, network storage or transmission, or broadcast for distance learning.

Send all inquiries to:
McGraw-Hill Education
Two Penn Plaza
New York, New York 10121

ISBN: 978-0-02-123221-5
MHID: 0-02-123221-0

Printed in the United States.

1 2 3 4 5 6 7 8 DOC 17 16 15 14 13 12

A



Genre Play



Essential Question

How do plants change as they grow?

A stylized illustration of a tree branch with several green leaves, set against a light gray diamond-shaped background. The branch is positioned behind the title text.

A Tree's Life

by Mateo Garza

illustrated by Louise A. Ellis

**PAIRED
READ**

Inside Trees.....13

Characters: Squirrel, Nan, Ollie, Mom, Dad

Setting: A clearing in the woods

Squirrel: The Cash family has come to the woods for a picnic.

Nan: Dad, this is a good meal.

Ollie: I like this green apple.

Mom: We should go for a hike after this.

Dad: Yes, we can all go together.





(Later, the family returns from their hike and cleans up.)

Dad: That was a fun day!

Nan: That's the last of the trash.

Ollie: I hope we have a snack for the ride home.

Mom: We have some fruit.



Squirrel (eating the apple core):

The family left this apple core. It makes a good snack.

(As Squirrel finishes the apple core, some seeds fall to the ground.)

(Squirrel is getting ready for winter.)

Squirrel: The apple seeds grew into a tree. The water from the rain will help it grow.



Squirrel: The Cash family is back. They are taking a walk and see a new tree growing. It will not have apples for a while.

Mom: Look, it's an apple tree.

Nan: I wonder if the apples will be red, yellow, or green.





(Squirrel is sleeping. The Cash family is playing in the snow.)

Ollie: Look! It's the apple tree!

Nan: It looks different without its leaves.



Squirrel (stretching): Spring is here!
The apple tree is awake. It's much
bigger now.

Ollie: Look at the pretty flowers.

Nan: The bees will help the
apples grow.

Squirrel: Our tree began as a seed.
Then it started to grow. The kids are
older now. So is the tree.

Nan: Water, sun, and bees helped the
apple tree grow.



Squirrel: The Cash family has come to the woods again.

Nan: I like eating outside.

Ollie: These are good cherries.

Mom: I wish we could come here all the time.

Dad: We will come back again.



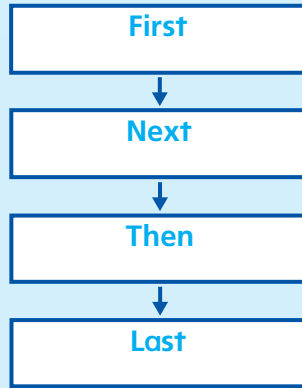


Squirrel: The Cash family has cleaned up. But they left some cherry pits. Will a new cherry tree grow?

Respond to Reading

Retell

Use your own words to retell *A Tree's Life*.



Text Evidence

1. Look at page 5. What happened after seeds fell to the ground?

Sequence

2. Look at page 8. What happened when the tree got older? Sequence
3. How can you tell that *A Tree's Life* is a play? Genre



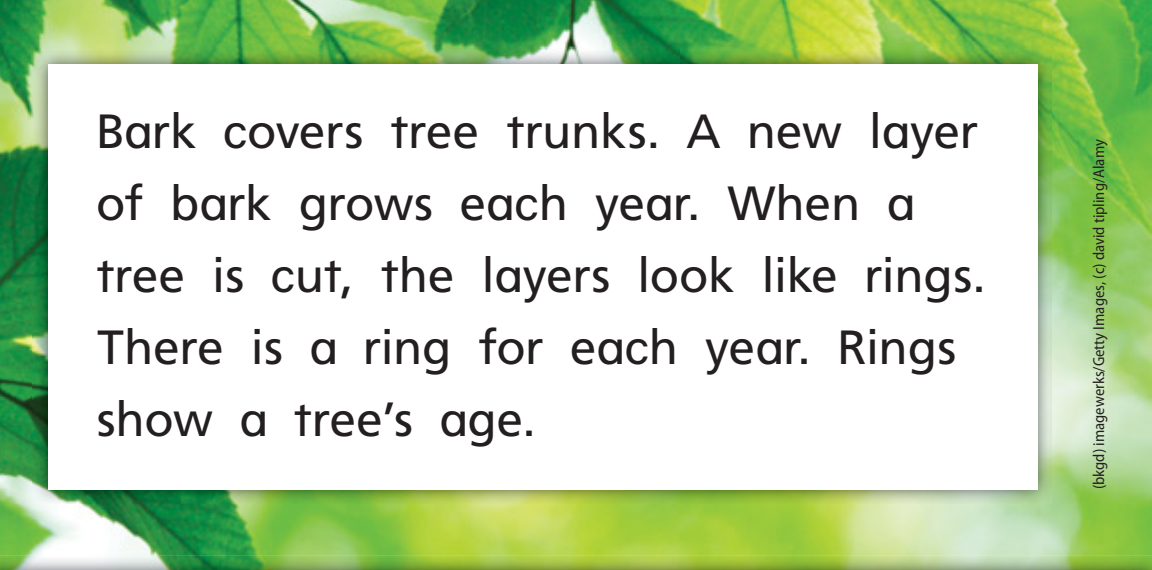
Genre Nonfiction

Compare Texts

Read about what's inside trees.

Inside TREES

(t) Scott Heiner/Stock Vectors/Getty Images, (c) Woods Wheatcroft/Aurora Photos/CORBIS

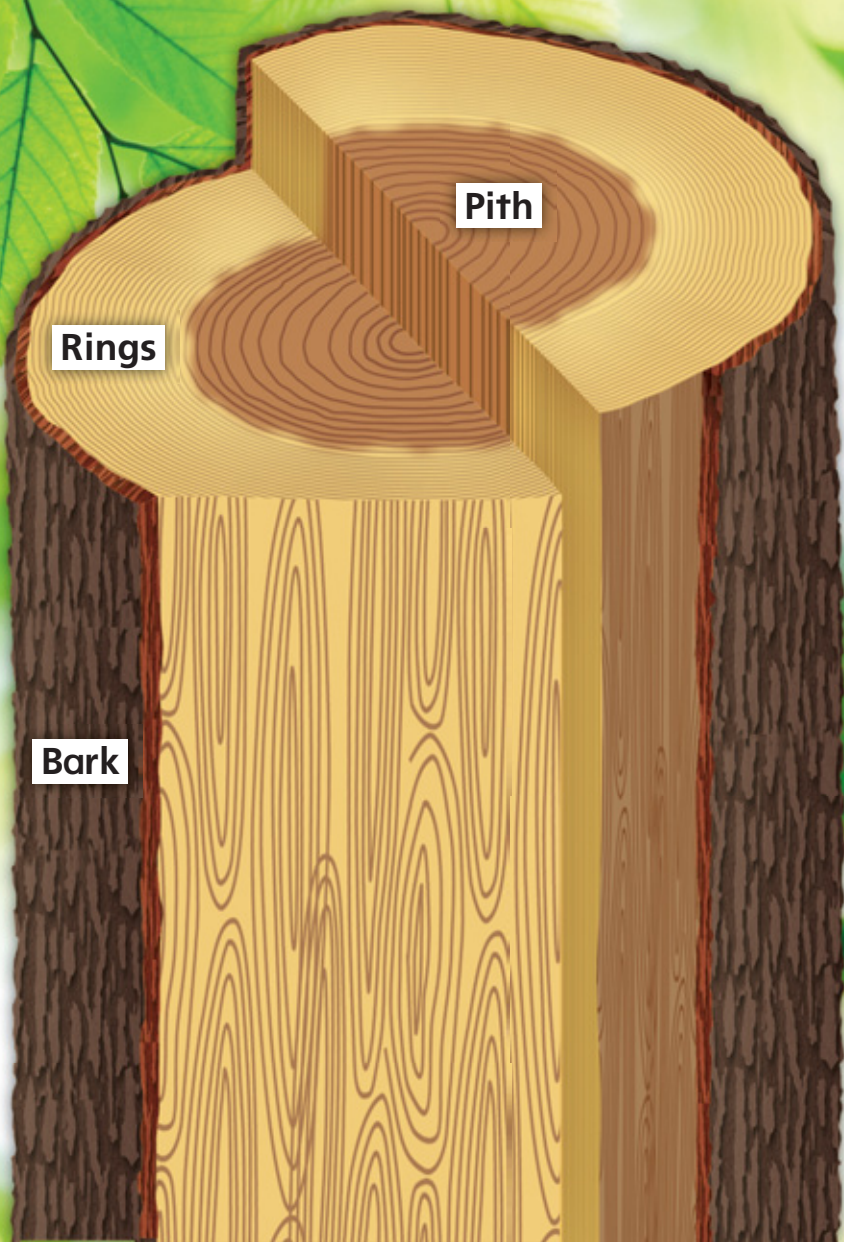


Bark covers tree trunks. A new layer of bark grows each year. When a tree is cut, the layers look like rings. There is a ring for each year. Rings show a tree's age.

(bkgd) Imagewerks/Getty Images, (c) david tipling/Alamy



The lighter rings grow in spring and summer, and the darker rings grow in fall and winter.



Make Connections

Which parts of the apple tree did you see in *A Tree's Life*? [Text to Text](#)

Focus on Science

Purpose To discuss which foods grow and which foods do not

What to Do

Step 1

Look at these foods.

strawberries crackers pancakes

bananas cucumbers muffins

Step 2

Make a chart like this one.

Grows	Does Not Grow

Step 3

Fill in the chart with the names of foods.

Conclusion Discuss your chart with a partner. Think of more foods that grow and foods that do not grow.

Thinkmark

Setting

Where does *A Tree's Life* take place?

Characters

Who are the main characters?
Which character is the narrator?

Sequence of Events

What happened **first** in *A Tree's Life*? What happened **next**?
What happened **last**?