

# *A Tree Full of Life*

by Susan Evento

## STRATEGIES & SKILLS

### Comprehension

**Strategy:** Make, Confirm,  
Revise Predictions

**Skill:** Main Topic and  
Key Details

### Phonics

Soft *c* and *g*: /j/  
*dge, ge, lge, nge, rge*

### Vocabulary Strategy

Suffixes

### Vocabulary

buried, escape, habitat,  
journey, nature, peeks,  
restless, spies

### Content Standards

Science

Life Science

Word count: 301\*\*

**Photography Credit:** Cover Purestock/Getty Images.

\*\*The total word count is based on words in the running text and headings only. Numerals and words in captions, labels, diagrams, charts, and sidebars are not included.

CCSS

Genre **Informational Text**



**Essential Question**

**What are features of different animal habitats?**

# *A Tree Full of Life*

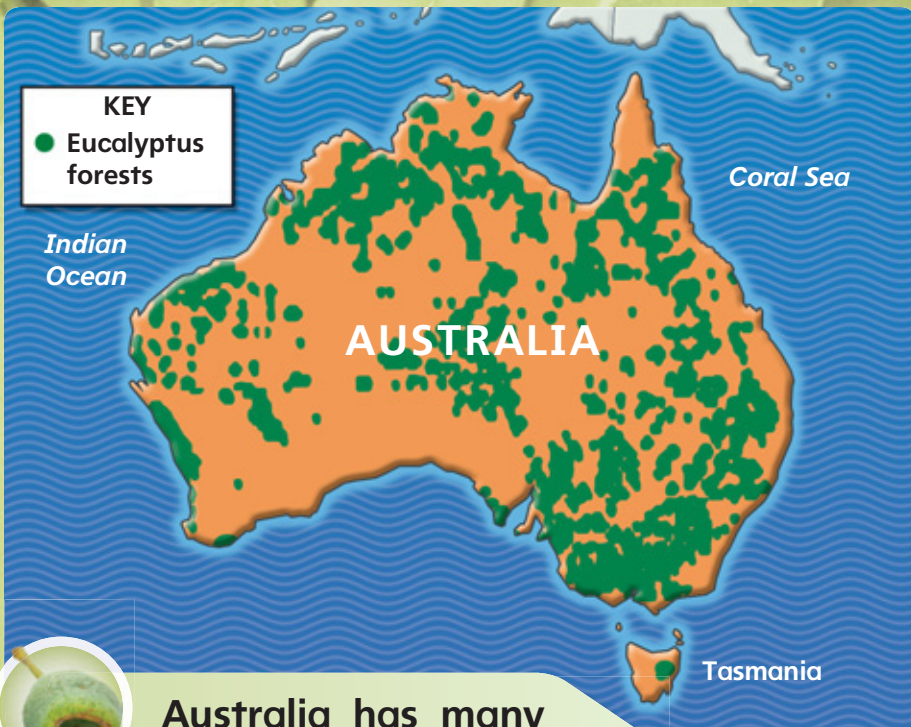
by Susan Evento



**PAIRED  
READ**

**Life in a Termite Mound . . . .17**

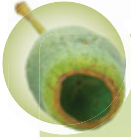
The eucalyptus tree stands tall. It grows in Australia. It is a habitat, or home, to many animals.



Australia has many eucalyptus forests.

(map) Rob Schuster; (background) Gerry Whitmont/Australian Picture Library/CORBIS; (caption inset) Kitch Bain/Alamy

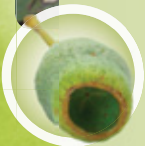
This giant tree has a strong trunk. Its leaves smell sweet.



**Eucalyptus leaves are sweet, but poisonous!**



A koala bear lives in this tree. It eats the tree's leaves at night. It can eat a whole pound of leaves.



The koala's stomach breaks down the poisons in the eucalyptus leaves.



A baby koala is called a joey.

The koala sleeps most of the day. It lies between the tree's branches.

**STOP AND CHECK**

Why is the eucalyptus tree important to koalas?



The koala bear doesn't spend much time on the ground.

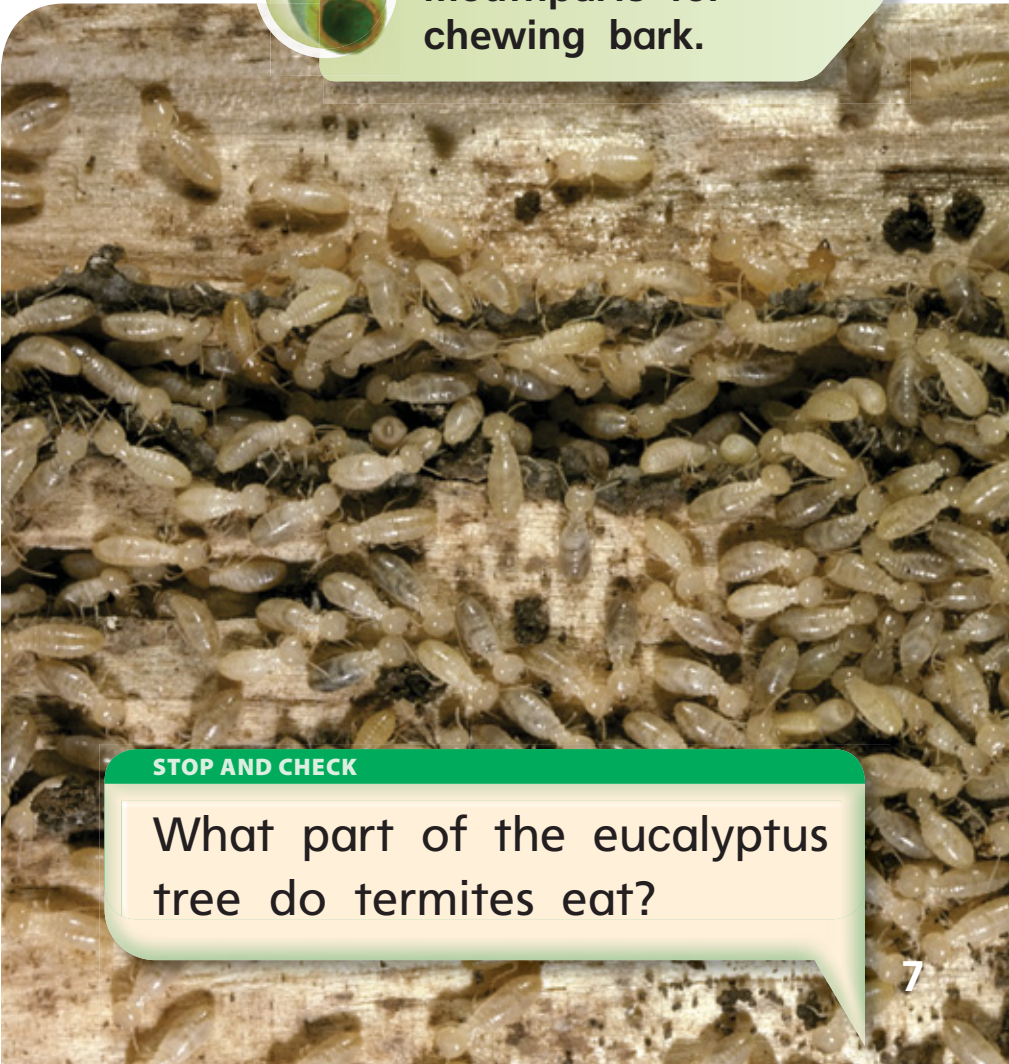
The koala wakes. It climbs down. But it doesn't journey far. It moves to the next eucalyptus tree.



Many termites are buried in this eucalyptus tree. They chew its bark. This makes a paste. They eat the paste. They use it to build nests.

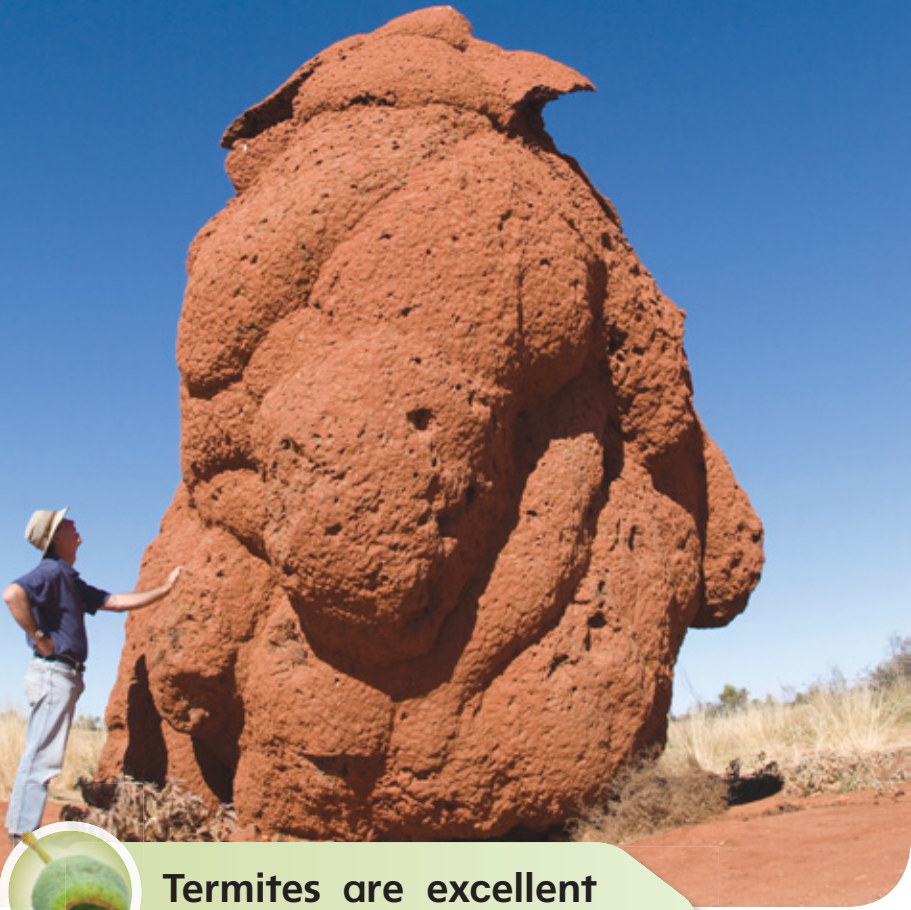


Termites have strong mouthparts for chewing bark.



**STOP AND CHECK**

What part of the eucalyptus tree do termites eat?



**Termites are excellent nest builders.**

Termites are the hardest workers. They eat large holes in eucalyptus trees. These holes make good nests.

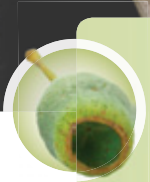
The kookaburra is a bird.  
It peeks out of its nest.  
It spies an enemy. It drops  
back inside.



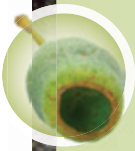
The kookaburra cries  
"ha-ha-ha" and is called  
the laughing bird.



A sugar glider is a small possum. It lives in the eucalyptus tree. It eats the tree's sap.



**Sugar gliders use a nest in a hollow made by termites.**



The possum  
sleeps in its  
nest all day.

This possum eats the leaves  
and flowers. Its nest is high  
off the ground.

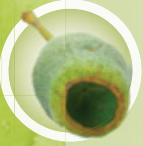
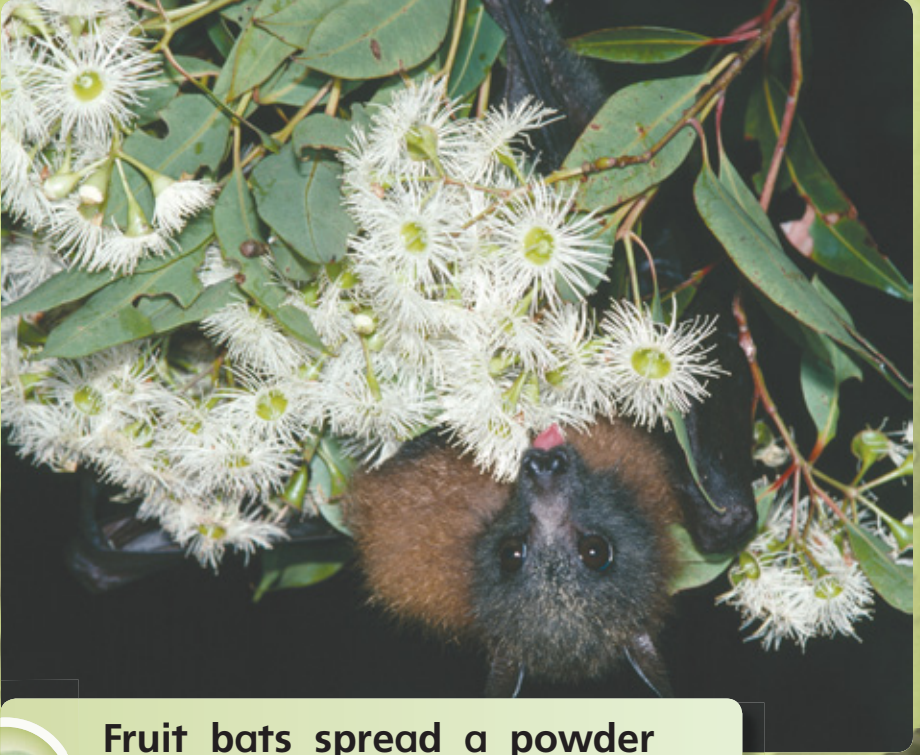
**STOP AND CHECK**

Which animals live in nests  
made by termites?



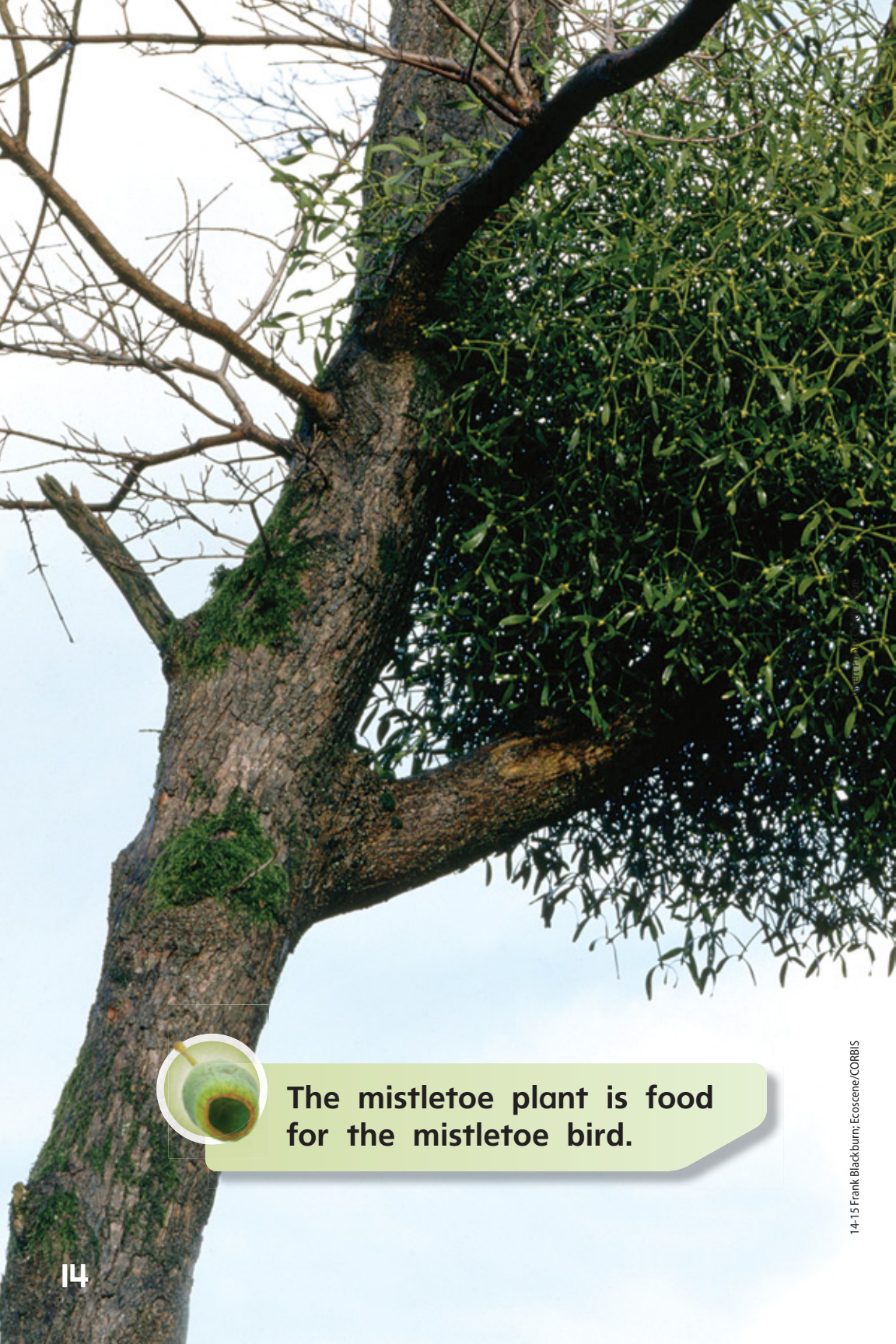
**Wombats run fast when enemies chase them.**

A wombat eats eucalyptus roots. Then it makes its escape. It races into its tunnel. It sleeps all day.



Fruit bats spread a powder called pollen to help new trees grow.

It grows dark. Fruit bats become restless. They fly to this tree. They eat its fruit. In nature, animals need plants.



**The mistletoe plant is food for the mistletoe bird.**





This plant lives here too. It eats the tree's sap.

A bird eats this plant's seeds.

The eucalyptus tree is full of life!

# Respond to Reading

## Summarize

Use the chart to summarize *A Tree Full of Life*.

Main Topic		
Detail	Detail	Detail

## Text Evidence

1. How do you know that this book is a nonfiction text? **Genre**
2. How do koalas use eucalyptus trees? **Main Topic and Key Details**
3. What does *hardest* mean on page 8? **Suffixes**
4. Write about the main idea on page 7. **Write About Reading**

## Compare Texts

How are a eucalyptus tree and a termite mound alike?

# Life in a Termite Mound

Termites build huge mounds, or nests. A king and a queen termite start a colony. A colony is a group of termites. They all live in the nest.

More than a million termites may build a nest together.

## Jobs in the Colony

The queen lays eggs in the nest. Many worker termites gather food. They feed the young. They work hard.



The inside of a termite mound looks like a sponge.



Soldier termites keep the nest safe. They attack ants. They use their jaws to attack.

Termites	Duties
king and queen	start colony
queen	lay eggs
workers	build/take care of nests collect food to feed young
soldiers	protect nests



## Make Connections

What does a termite mound look like? [Essential Question](#)

How are eucalyptus trees and termite mounds alike? [Text to Text](#)

# Focus on Science

**Purpose** To find out about the different features of a habitat

## What to Do

**Step 1**

Think about the animals that depend on the eucalyptus tree.

.....

**Step 2**

Draw a chart like this one.

Animal	Where They Live in Tree	Part of Tree They Eat

.....

**Step 3**

Fill it in with facts from the text.

**Conclusion** Talk about what you learned.

# Thinkmark

## The Topic

What is *A Tree Full of Life* mostly about?

## Author's Purpose

Why did the author write *A Tree Full of Life*?

## Vocabulary

What new words did you learn in this text?

## Make Connections

How is *A Tree Full of Life* like other books you know?