

## Weekly Concept **Now and Then**

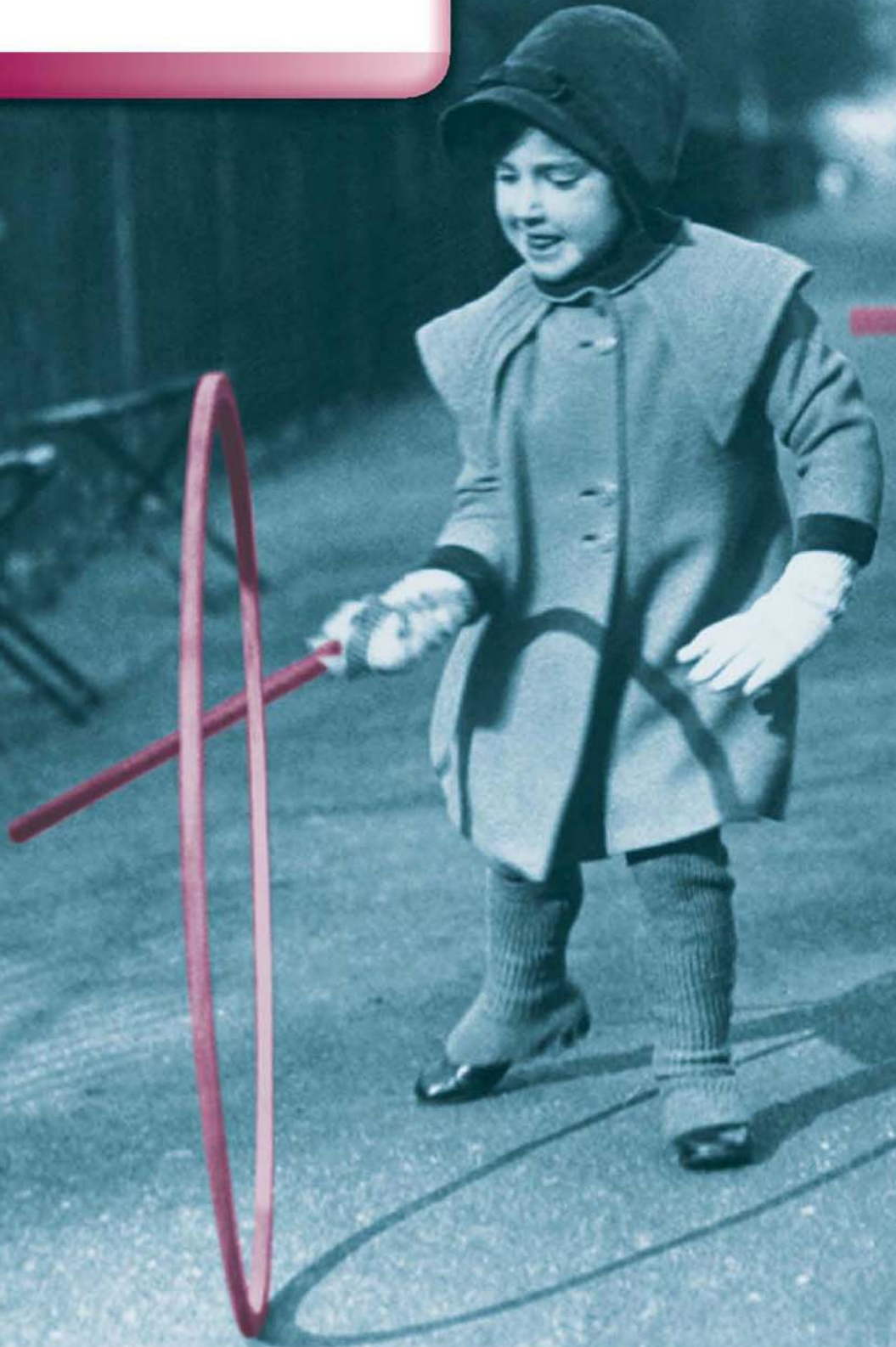


### Essential Question

How is life different than it was long ago?



**Go Digital!**





# Once Upon a Time



## Talk About It

What are the children playing? Tell how they are like or different than you.



**ago**

Schools were  
small long **ago**.



**boy**

That **boy** likes  
to skate.



**girl**

This **girl** can  
ride a bike well.



how

**How** did kids play in the past?



old

**Old** homes were made of logs.



people

**People** went by horse and buggy.



## Your Turn



Say the sentence for each word.  
Then make up another sentence.

**Go Digital!** Use the online visual glossary

(t) VisionsofAmerica/Joel Sohm/Photodisc/Getty Images;  
(c) Jupiterimages/Comstock Images/Getty Images; (b) Don  
Mason/Blend Images LLC; (r) Constance Bannister Corp/  
Archive Photos/Getty Images; (c) IS2 from Image Source/  
Alamy; (b) Design Pics Inc./Alamy



## Long o, u, e

The oe spelling makes the long o sound in phone.

The ue spelling makes the long u sound in use.

The ee spelling makes the long e sound in these.



bone

cute

Eve

drove

hoped

these

Steve

mule

stone

broke

voted

cubes



Can Pete use this phone?

Zeke is Rose's cute mule.



### Your Turn

COLLABORATE



Look for these words with o\_e, u\_e, and e\_e in "Life at Home."

home

homes

pole

huge

use

stove

these

those