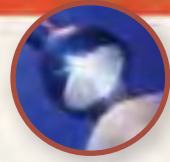
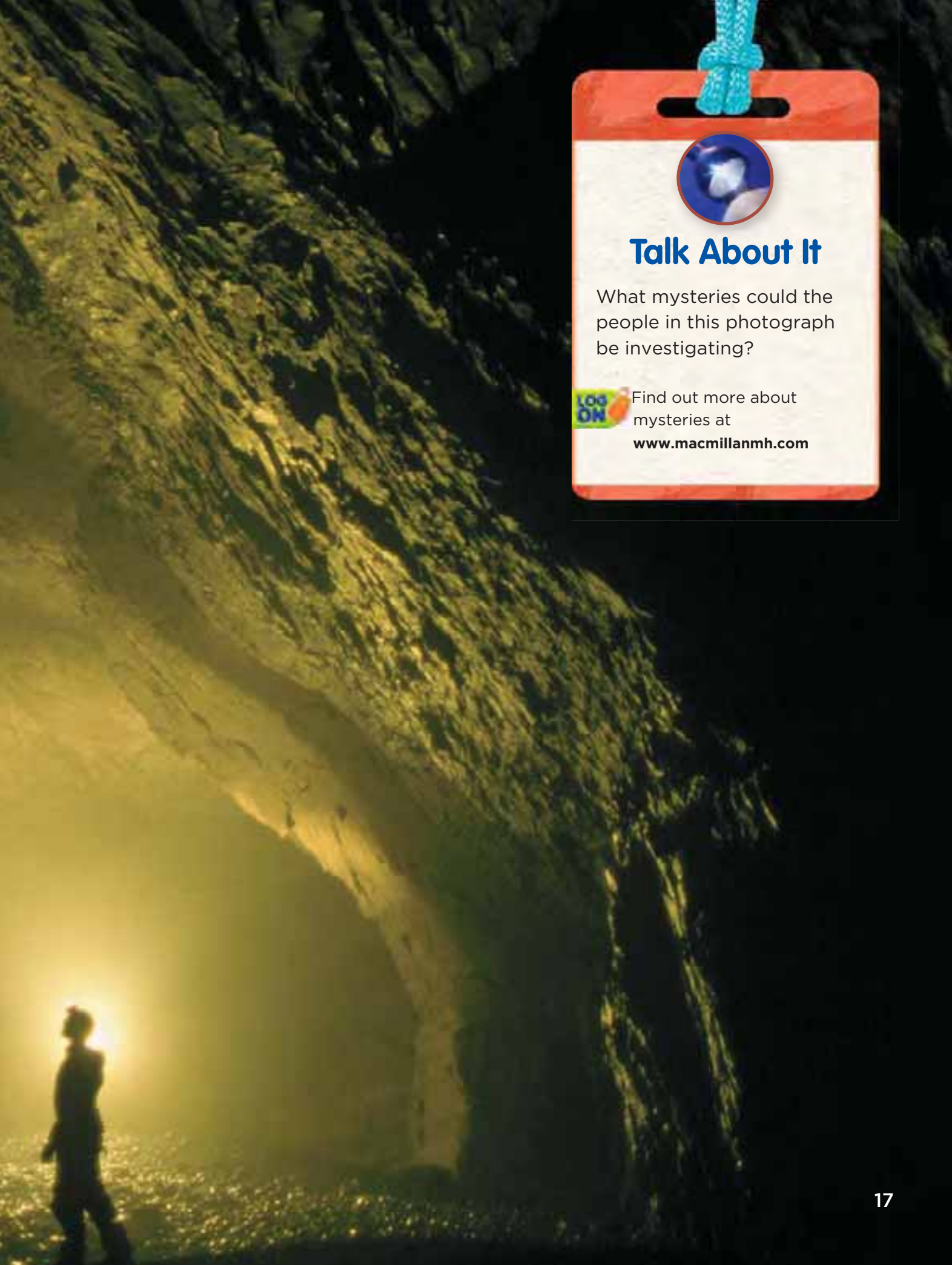


# Mysteries

A dramatic scene inside a cave. A bright, vertical beam of light illuminates the center of the frame, creating a strong contrast with the dark, textured rock walls. In the lower right foreground, several people wearing headlamps are silhouetted against the light, looking towards the source of the beam. The overall atmosphere is mysterious and adventurous.



## Talk About It

What mysteries could the people in this photograph be investigating?



Find out more about mysteries at

[www.macmillanmh.com](http://www.macmillanmh.com)

## Vocabulary

assignments      suspicious  
consideration    evidence  
allergies          consume  
accuse



## Dictionary

**Unfamiliar Words** are words you do not know. You can find the meanings of unfamiliar words in a dictionary. Look up the meaning of *assignment*.



# The Case of the

# Blurry

# Board

by Jaime Beaurline

## Blurry Vision

After collecting homework **assignments**, Mrs. Morris said, "Jason, would you please read the first problem on the board?"

Jason put on his glasses. "That's weird," he said.

"What's the matter?" Mrs. Morris asked.

"I can't see the board. Everything is blurry," explained Jason.

Mrs. Morris thought a moment. After some **consideration**, she suggested, "Why don't you go see the school nurse? Maybe you have **allergies** to something that's blooming now."

## Colliding Classmates

Jason walked down the hall. He turned the corner and BAM! He and Susie Hu bumped into each other. Their glasses went flying.

Susie was about to **accuse** Jason of not looking where he was going, but she had been on her way to clean her own glasses.

“That’s weird,” said Jason, as soon as they had put on their glasses. “Now I can see just fine.”

“Me too!” Susie exclaimed.

“Something **suspicious** is going on,” said Jason.

## Mystery Solved

“Our glasses must have gotten switched when we bumped into each other earlier today,” Jason said.

“Hmmm...” said Susie. “What’s your proof? I need **evidence!**”

“Look, our glasses are exactly the same,” noted Jason.

“You’re right!” said Susie. “I’m very glad you solved the mystery. Lunch period is next and I would have hated to **consume** a pencil instead of a pretzel rod!”



### Reread for Comprehension



#### Make Inferences and Analyze

**Problem and Solution** The plot is what happens in a story. The plot often includes a problem and a solution to the problem.

A Problem and Solution Chart can help you make inferences and analyze a story. Reread the selection to find the problem, the actions taken by the characters, and the solution.

