

Performing Arts

Genre

A **Nonfiction Article** gives facts about real people, things, or events.

Text Feature

Interviews are questions asked by one person and answered by another.

Content Vocabulary

author

interviewed

appeal

GETTING TO KNOW JOSEPH BRUCHAC

BY CHRIS LOBACK

Joseph Bruchac is the **author** who wrote *Pushing Up the Sky*. To learn more about Mr. Bruchac, we **interviewed** him. We asked him questions about his work and he answered them. In this interview the words after **Q:** are the question the interviewer asked. The words after **A:** are Joseph Bruchac's answer.

Q: Why do you write Native American stories?

A: I think that they **appeal** to a lot of people. Children and adults have told me that they like to read them. Native American stories are fun to hear and also teach good lessons.



Q: Why do you write plays?

A: I write plays for two reasons. The first is that many teachers told me it was hard to find good Native American plays for kids. The second reason is that I love to give kids the chance to take part in a story.

Q: Which of your stories do you like the best?

A: My favorites are the stories with monsters and scary events in them. One of these is *Skeleton Man*. I like this scary story because it shows how even a child can beat a monster if she does the right thing!

Connect and Compare

1. What is one reason Joseph Bruchac writes plays?
Interview
2. Think about this interview and *Pushing Up the Sky*. Do you think this is one of Joseph Bruchac's favorite stories? Explain why or why not.

Reading/Writing Across Texts



Performing Arts Activity

Find another play by Joseph Bruchac. Perform it with other students.



Find more about plays at
www.macmillanmh.com



Write a Play

Writer's Craft

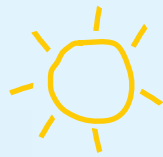
Beginning, Middle, and End

A play has a special form. The characters have lines. The character's name is written before each line. A play has a good **beginning, middle, and end.**

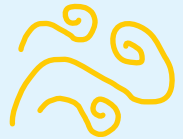


I used the correct form. I gave my characters lines to speak.

My play has a good beginning, middle, and end.



Sun and Wind



by Joe M.

Characters: Narrator, Wind, Sun, Man

Narrator: Wind and Sun were fighting.

Wind: I am stronger than you, Sun.

Sun: No, you're not, Wind. Prove it.

Wind: Do you see that man? Whoever can make him take off his coat is stronger.

Sun: Wind, you can go first.

Man: Brrrr. The wind is cold. I will button up my coat to keep warm.

Wind: I give up. It's your turn, Sun.

Man: The sun is out. Now it is warm. I will take off this heavy coat.

Wind: You win, Sun. You are stronger.



Your Turn

Write a play about make-believe characters. Follow the form of Joe's model to write your play. If you use the pronoun *I*, remember to capitalize it. Then use the Writer's Checklist to check your writing.

Writer's Checklist

- Organization:** Does my play use the correct form and have a good **beginning, middle, and end**?
- Ideas:** Is my play about something make-believe?
- Conventions:** Did I use pronouns correctly? Did I capitalize *I*?
- Sentence Fluency:** Do my sentences flow? Are they interesting when they are read aloud?