



# WHERE IS IT?



Scan to review worksheet

Expemo code:  
15R8-L7JA-3TKD

## 1 Warm up

These pictures show things you find in a town. Match each word to a picture.

bakery  
museum  
supermarket

bank  
pharmacy  
town square

cinema (US movie theater)  
post office  
traffic lights



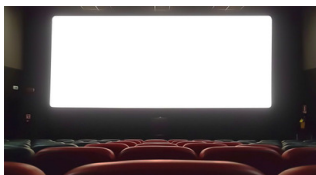
1. \_\_\_\_\_



2. \_\_\_\_\_



3. \_\_\_\_\_



4. \_\_\_\_\_



5. \_\_\_\_\_



6. \_\_\_\_\_



7. \_\_\_\_\_



8. \_\_\_\_\_



9. \_\_\_\_\_



**Where do you go ...**

1. ... if you're sick?
2. ... if you have some free time?
3. ... if you want to send a letter?
4. ... if you're hungry?
5. ... if you need to change money?

What do people do in a town square?

**2**

**Listening**



Claire is in a new town. She is lost, and her phone is out of battery. Listen to the three dialogues and make a note of which places Claire asks about.

1. \_\_\_\_\_
2. \_\_\_\_\_
3. \_\_\_\_\_
4. \_\_\_\_\_

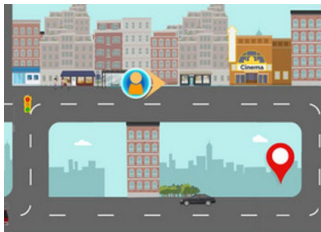
Why is the last dialogue different to the others?



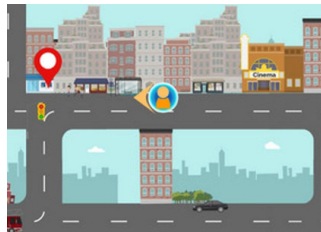


Listen again and match maps A, B and C with the dialogues 1, 2 or 3.

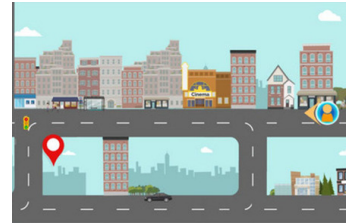
bank	supermarket	museum
------	-------------	--------



A.



B.



C.

3

Language point

Asking for directions - study the sentences and information and answer the question.

Excuse me, **is there** a bank **near here**?

Excuse me, **I'm looking for** the museum.

Excuse me, **can you tell me the way to** the town square?

We use a range of phrases to ask for directions when we are lost.

- How do we open these conversations?

Giving directions - we use a range of phrases to give directions. Match the words and pictures.

go straight on	at the traffic lights	turn right
turn left	go past the hotel	on the corner



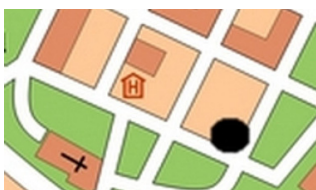
1. \_\_\_\_\_



2. \_\_\_\_\_



3. \_\_\_\_\_



4. \_\_\_\_\_



5. \_\_\_\_\_



6. \_\_\_\_\_



# 4 Practice

Find the locations in the picture. Read the dialogues and use the words in the box to complete the sentences.





looking	ahead	straight	tell	at
corner	on	past	excuse	far

**Location 1**

\_\_\_\_\_ <sup>1</sup> me, is there a supermarket near here?

Yes, there is.

How do I get there?

Turn right at these traffic lights. Then go \_\_\_\_\_ <sup>2</sup> on past one street and turn right again.

Thank you!

**Location 2**

Excuse me, I'm \_\_\_\_\_ <sup>3</sup> for the museum.

Go straight \_\_\_\_\_ <sup>4</sup> and turn left \_\_\_\_\_ <sup>5</sup> the traffic lights. Then turn left again. It's \_\_\_\_\_ <sup>6</sup> the right.

Is it \_\_\_\_\_ <sup>7</sup> ?

No. It's only two minutes from here.

Great! Thanks!

**Location 3**

Excuse me, can you \_\_\_\_\_ <sup>8</sup> me the way to the cinema?

Sure. Go \_\_\_\_\_ <sup>9</sup> the supermarket and then turn right. Go straight on for about two minutes and you'll see the cinema on the \_\_\_\_\_ <sup>10</sup> .



## 5 Speaking

You are visiting the town in the picture. Work in pairs to plan and perform short dialogues following the instructions below. Use a range of language to ask for and give directions.

- Location 4: A asks for directions from this place to the café. B gives directions.
- Location 5: B asks for directions from this place to the post office. A gives directions.
- Location 6: A asks for directions from this place to the pharmacy. B gives directions.
- Location 7: B asks for directions from this place to the market. A gives directions.

## 6 Extra practice/homework

Find and correct five mistakes in each dialogue. You do not need to use the picture for this exercise.

### Dialogue 1

- Excuse, can you tell me where the bakery is?
- Of course. It's on Castle Street.
- How I get there?
- Go ahead the cinema and turn right on the traffic lights. It's at the left.
- Thanks.

### Dialogue 2

- Excuse me, I looking for the market.
- Go straight past and turn left at the end of the street. It's at the corner.
- Is it long?
- No, it's not. It's about ten minutes if you're walk.
- Thanks!

## 7 Optional extension

It can be difficult to understand directions. These phrases can help. Use the missing words from the box to complete the sentences.

again                      catch                      check                      repeat                      you

1. I'm sorry, can you \_\_\_\_\_ that?
2. I'm afraid I don't understand. Can you say it \_\_\_\_\_ more slowly please?
3. I didn't \_\_\_\_\_ that - do I turn right or left at the traffic lights?
4. Sorry, I don't follow \_\_\_\_\_ - is it on the right or the left?
5. Let me just \_\_\_\_\_ what you said: I go past the bank and it's on the corner?

How are sentences 1 and 2 different from sentences 3, 4 and 5?

Practise saying the sentences.

Work in pairs to repeat one dialogue from the lesson, asking for and giving directions.

This time use one of these sentences to help you understand.