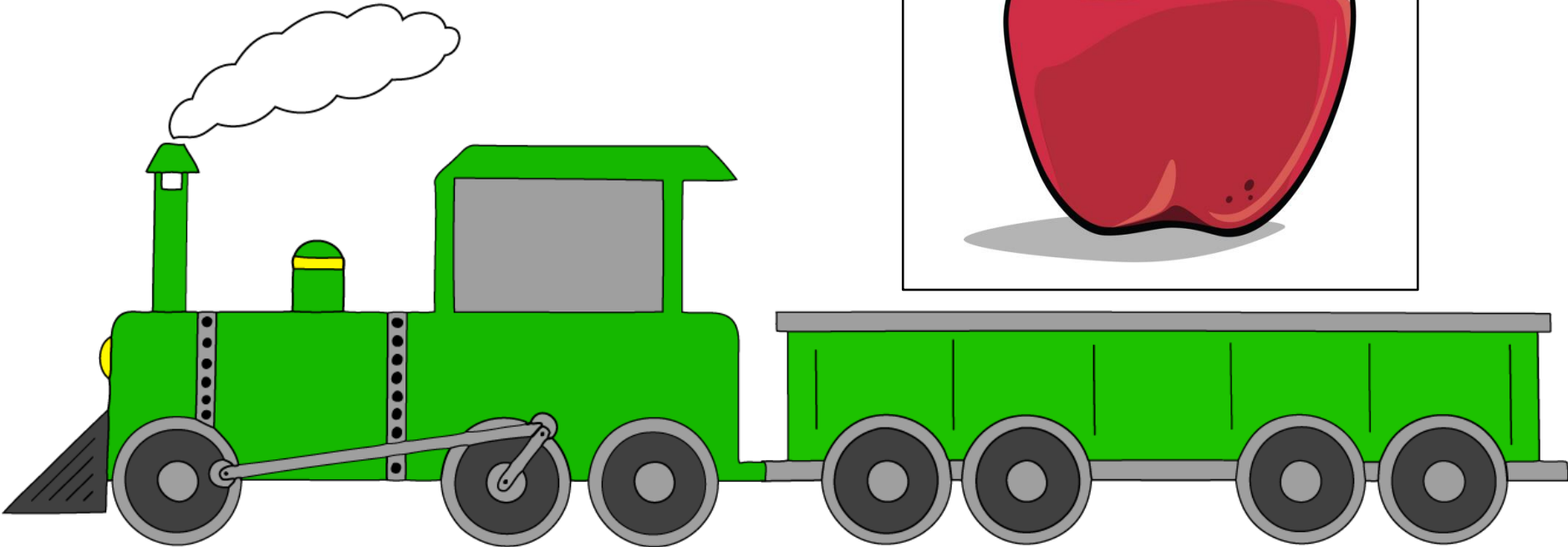
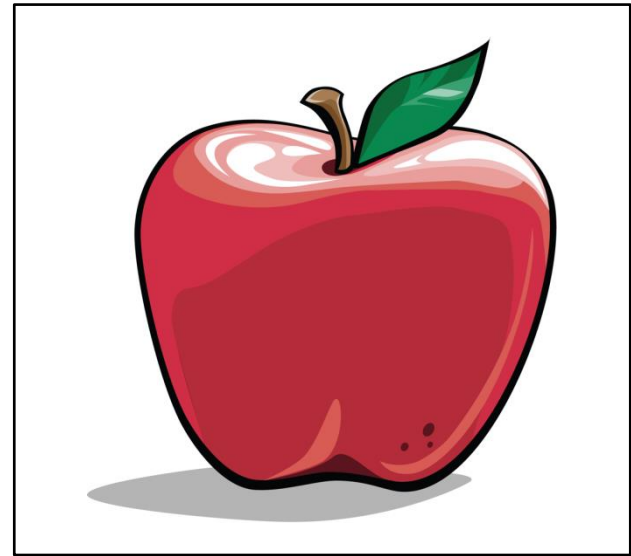


# RFFC Colors

A fun learning activity from [PositivelyAutism.com](http://PositivelyAutism.com)

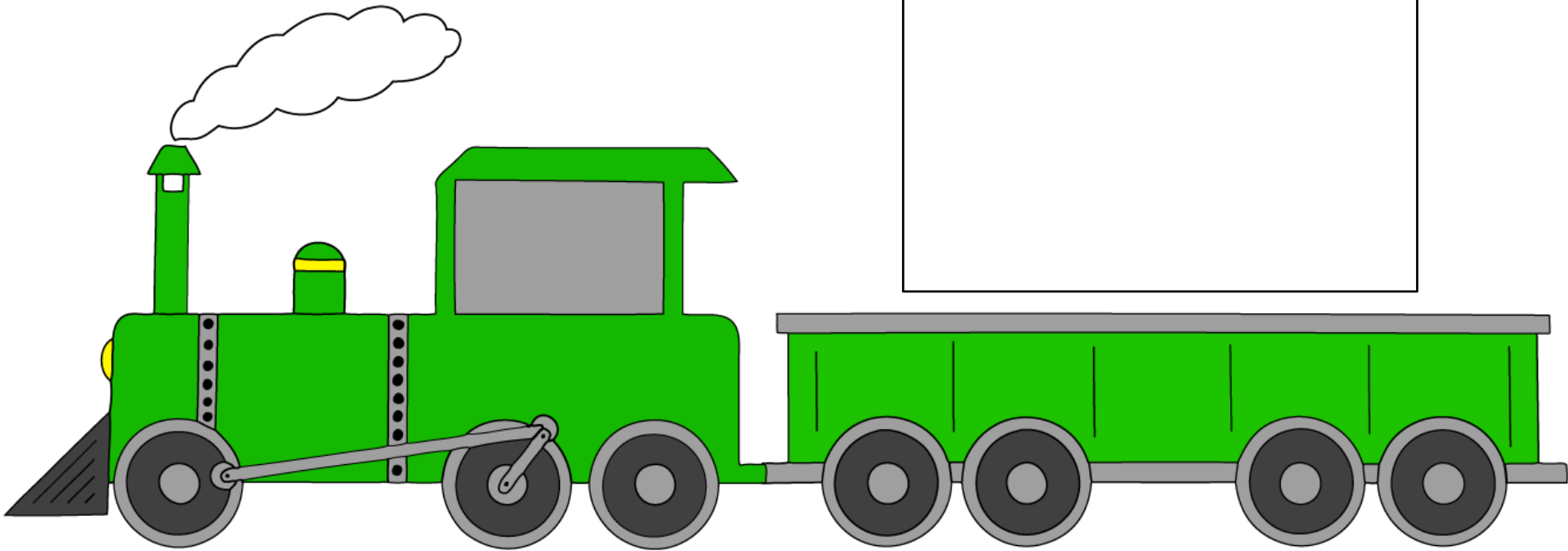
This train carries things that are red. Can you find all the things that are red?



# How to Use RFFC Colors

- In school and ABA programs, we often work with students with autism on receptive function, feature, and class using flashcards. I wanted to make this activity a little more fun and motivating for the students, so I made a fun train-theme board.
- To set-up, you'll first pick a color and put that color in the sentence box. Put an array of cards, (some of your chosen color, some of other colors) in front of the student.
- Make it fun by saying enthusiastically, "Here comes the color train!" (as you put the train board in front of the student).
- Say, "This train carries things that are **red**! Can you find all the things that are **red**?" Gesture toward the picture array if needed.
- The student puts all of the red pictures in a stack on top of the train car. You may need to model this a few times at first so that the students know what to do.
- The goal is for the student to differentiate the color you ask for from the other colors.

This train carries things that



are red.

are green.

are blue.

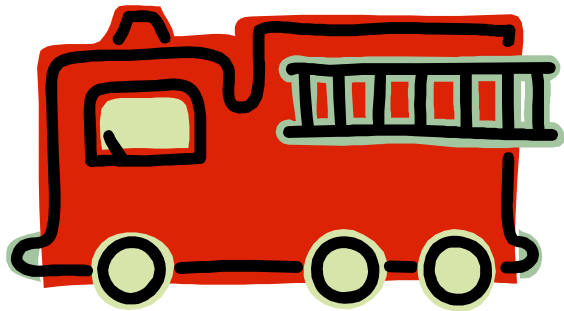
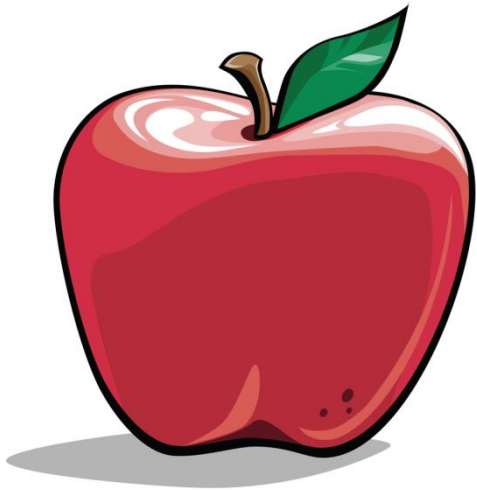
are yellow.

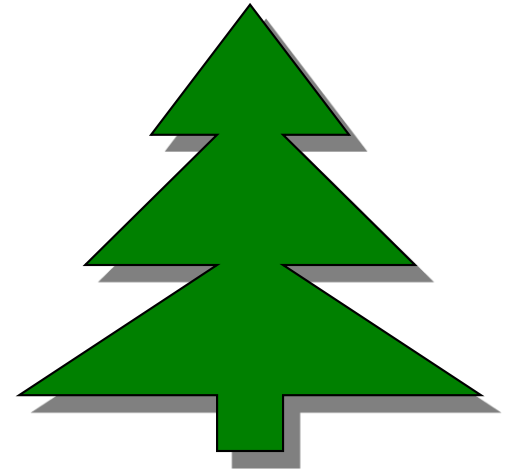
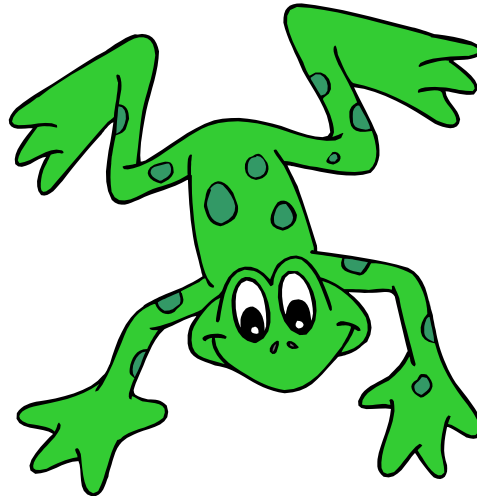
are orange.

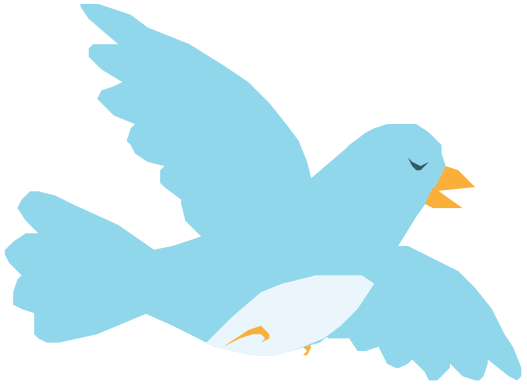
are white.

are black.

are brown.



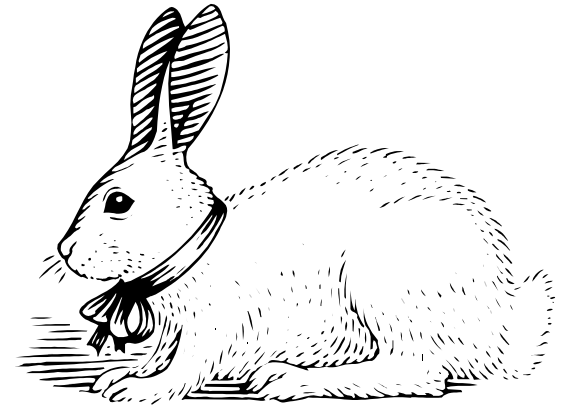


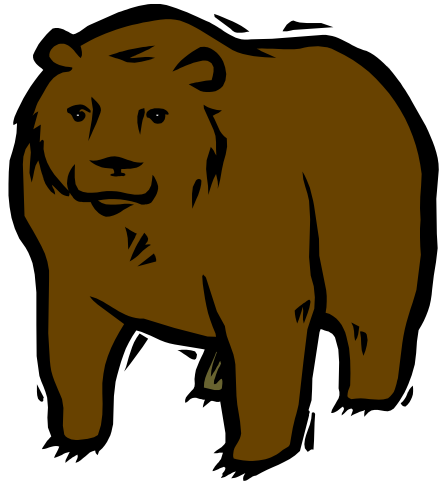
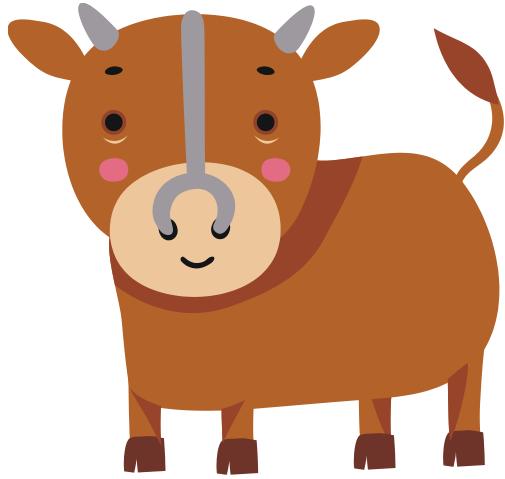


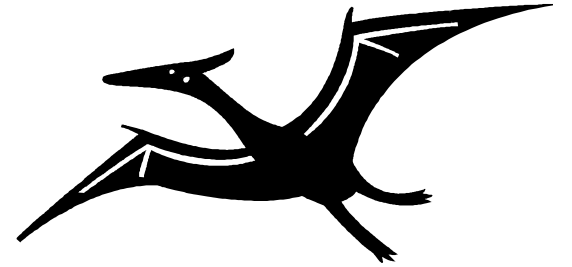
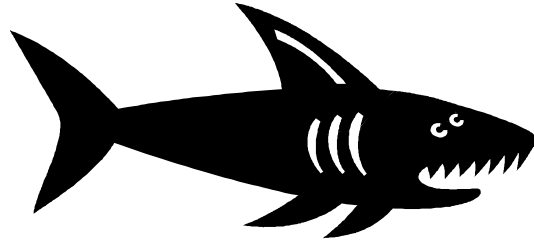












# Clip Art Credits

- Train Clip Art by Martha Moore - <http://www.teacherspayteachers.com/Store/Martha-Moore>
- Other clip art from Microsoft Office Clip Art